



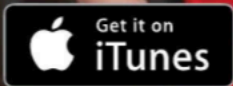
Magia

NIKOLETT PANKOVITS

New York City is a creative hothouse where artists from around the globe come together and develop new hybrids evolving from the experience of transplanting their musical roots.

For the Hungarian-born vocalist Nikolett Pankovits, the Gotham scene provided an ideal forum for melding the music of her youth with her love of jazz and kindred musical currents.

Her impressive debut album *Magia* is a startlingly beautiful project that centers on Hungarian songs set to various Latin American rhythms.



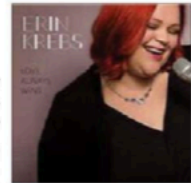
www.nikolettpankovits.com



10. "Love Ride"

ERIN KREBS

She might be a best-kept secret of her native Wisconsin, but vocalist and composer ERIN KREBS is making a bid for a wider audience with her debut CD, *Love Always Wins* (self-released). On 11 original numbers, Krebs draws inspiration from traditional and contemporary jazz and blues sources. A versatile group of musicians, including Krebs' husband, guitarist Jeff Johnston, help her achieve the desired mood, from intimate ballad to finger-snapping blues to funky R&B. On "Love Ride," the energetic opening track included here, the singer communicates the dizzying sensation of tumbling headlong into love. Her brisk lyrical delivery and joyful scat is supported by the topnotch rhythm section of pianist Mark Martin, bassist Andrew Merens and drummer Mike Malone, and punctuated by Stephen Cooper's tenor sax. Like many working musicians, Krebs is also involved in education, having taught in private schools for a decade and giving private lessons on flute, piano and voice at her home studio.



11. "Tropical Swing"

HOT STEEL & COOL UKULELE

Nothing brings to mind the tropical paradise of Hawaii quite like the sound of lap-steel guitar, particularly when it's combined with the sound of the ukulele. In fact, Hawaiians were early adapters of the lap steel, so named because the instrument — originally, a six-string acoustic guitar — was placed horizontally on the lap and played with a steel bar. On **HOT STEEL AND COOL UKULELE's** recording *Tropical Swing* (Schlimmer Twins Inc.), the quintet revisits classic tunes that were played by the *hapa haole* bands who performed at Waikiki beach hotels in the years leading up to World War II. Selections date back more than a century in some cases, and also include staples of the 1920s and '30s, such as "Aloha Means I Love You" and "My Little Grass Shack." Frontman Erich Sylvester affectionately recaptures the era with his earnest vocals and uke-strumming, and he receives spot-on backing from his band of aces. The title track, a charmer from 1936, opens the album with an aural postcard that effectively expresses the exotic allure of Hawaii for many decades of tourists. It also provides a showcase for steel guitarist Greg Sardinha, fiddle player Duane Padilla, guitarist Sonny Silva and bassist Steven Strauss.

